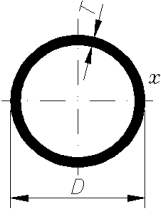


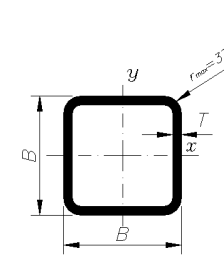
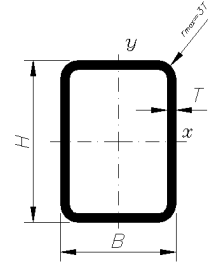
**KONSTRUKCIONE CEVI /
STRUCTURAL HOLLOW SECTIONS**



Prečnik / Diameter D [mm]	Debljina zida / Wall Thickness T [mm]											
	1.6	1.8	2	2.5	2.7	3	3.5	4	4.5	5	5.5	6
	Masa / Weight M [kg/m]											
17.1	0.61	0.68	0.74									
21.3	0.78	0.87	0.95	1.16								
26.9	1.00	1.11	1.23	1.50								
33.7	1.27	1.42	1.56	1.92	2.06	2.27						
42.4	1.61	1.80	1.99	2.46	2.64	2.91	3.36	3.79				
44.5	1.69	1.90	2.10	2.59	2.78	3.07	3.54					
48.3	1.84	2.06	2.29	2.83	3.04	3.35	3.87	4.37				
60.3	2.32	2.60	2.88	3.56	3.84	4.24	4.90	5.55				
76.1			3.65	4.54	4.89	5.41	6.27	7.11				
88.9			4.29	5.33	5.74	6.36	7.37	8.38	9.37	10.30		
101.6				6.11	6.59	7.29	8.47	9.63	10.78	11.90		
108				6.50	7.01	7.77	9.02	10.26	11.49	12.70	13.90	15.09
114.3				6.89	7.43	8.23	9.56	10.90	12.19	13.50	14.76	16.00
133						9.62	11.18	12.73	14.26	15.78	17.29	18.79
139.7						10.10	11.76	13.40	15.00	16.60	18.20	19.80
159						11.54	13.42	15.29	17.15	18.99	20.82	22.64
168.3						12.20	14.22	16.20	18.18	20.10	22.08	24.00

KVADRATNE CEVI / SQUARE TUBES

Veličina B (mm)	Debljina zida / Wall thickness T (mm)											
	1,5	1,8	2	2,3	2,5	3	3,5	4	4,5	5	5,5	6
	Masa / Weight M (kg/m)											
15	0.58	0.66	0.79	0.89								
16	0.66	0.78	0.85									
18	0.72	0.83	0.90	1.10								
20	0.81	0.95	1.03	1.24								
22	0.91	1.06	1.15	1.38								
25	1.05	1.23	1.34	1.60	1.61							
30	1.28	1.51	1.66	1.87	2.00	2.47						
35	1.52	1.79	1.97	2.23	2.39	2.78						
40	1.76	2.08	2.28	2.59	2.78	3.26	3.89					
50		2.64	2.91	3.31	3.57	4.20	4.80	5.61				
60			3.54	4.03	4.35	5.14	5.90	6.62				
70			4.15	4.75	5.14	6.08	6.99	7.88	8.99			
80			4.76	5.45	5.91	7.02	8.09	9.14	10.15	11.13		
90						7.97	9.19	10.39	11.56	12.70		
100						8.91	10.29	11.65	12.98	14.28	15.84	17.19
110						9.85	11.39	12.90	14.39	15.85	17.52	19.02
120						10.70	12.49	14.16	15.80	17.41	19.00	20.85
130						11.61	13.59	15.42	17.21	18.98	20.73	22.44
140						12.49	14.56	16.67	18.63	20.56	22.45	24.32
150						13.44	15.63	17.93	20.04	22.13	24.18	26.21



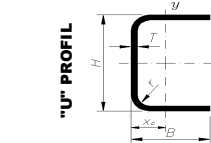
PRAVOUGAONE CEVI / RECTANGULAR TUBES

Veličina B (mm)	Debljina zida / Wall thickness T (mm)											
	1,5	1,8	2	2,3	2,5	3	3,5	4	4,5	5	5,5	6
	Masa / Weight M (kg/m)											
20 x 10	0.58	0.66	0.79									
25 x 15	0.81	0.95	1.03									
30 x 10	0.81	0.95	1.03									
25 x 20	0.96	1.14	1.25									
30 x 15	0.96	1.14	1.25									
30 x 20	1.05	1.23	1.34	1.50	1.61							
35 x 25	1.28	1.51	1.66	1.87	2.00							
40 x 20	1.28	1.51	1.66	1.87	2.00							
40 x 30	1.52	1.79	1.97	2.23	2.39	2.78						
50 x 25	1.65	1.96	2.16	2.47	2.67	3.16						
50 x 30	1.76	2.08	2.28	2.59	2.78	3.26						
60 x 30	1.99	2.37	2.60	2.95	3.18	3.73						
60 x 40	2.22	2.64	2.91	3.31	3.57	4.20	4.80					
70 x 50			3.54	4.03	4.35	5.14	5.90	6.62				
80 x 40			3.54	4.03	4.35	5.14	5.90	6.62				
80 x 50			3.84	4.40	4.75	5.61	6.45					
80 x 60			4.15	4.75	5.14	6.08	6.99	7.88				
100 x 40				4.75	5.14	6.08	6.99	7.88				
100 x 50						6.55	7.54	8.51				
100 x 60						5.91	7.02	8.09	9.14	10.15	11.13	
100 x 80						7.97	9.19	10.39	11.56	12.70		
120 x 40						7.02	8.09	9.14	10.15	11.13		
120 x 60						7.97	9.19	10.39	11.56	12.70		
120 x 80						8.91	10.29	11.65	12.98	14.28	15.84	17.19
120 x 100						9.85	11.39	12.90	14.39	15.85	17.52	19.02
140 x 70						9.33	10.83	12.32	13.79			
140 x 80						11.39	12.90	14.39	15.85	17.52	19.02	
150 x 100						13.04	14.79	16.51	18.20	19.86	21.50	
160 x 80						12.49	14.16	15.80	17.41	19.00	20.85	
160 x 100						13.59	15.42	17.21	18.98	20.73	22.44	
180 x 80						13.59	15.42	17.21	18.98	20.73	22.44	
200 x 80						16.67	18.63	20.56	22.45	24.32		
200 x 100						17.93	20.04	22.13	24.18	26.21		

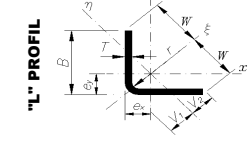
"U" PROFIL

Veličina / Size H x B [mm]	Debljina zida / Wall thickness T [mm]					Veličina / Size H x B (mm)	Debljina zida / Wall Thickness T [mm]			
	1,5	2,0	3,0	4,0	5,0		3,0	4,0	5,0	6,0
	Masa / Weight M [kg/m]						Masa / Weight M [kg/m]			
30 x 20	0.76	0.95	1.42			100 x 40	3.95	5.18	6.39	7.55
30 x 30	0.99	1.30	1.89			100 x 50	4.42	5.81	7.17	8.49
38 x 20	0.85	1.11	1.60			100 x 60	4.89	6.44	7.96	9.43
38 x 25	0.97	1.26	1.84			120 x 50	4.89	6.44	7.95	9.43
38 x 30	1.09	1.43	2.07			120 x 60	5.36	7.07	8.74	10.37
40 x 20	0.88	1.14	1.65			120 x 80	6.30	8.32	10.31	12.26
40 x 30	1.11	1.45	2.12			140 x 50	5.36	7.07	8.74	10.37
40 x 40		1.77	2.60			140 x 60	5.83	7.69	9.52	11.32
50 x 20		1.30	1.89			140 x 80	6.77	8.95	11.10	13.20
50 x 30		1.61	2.36			150 x 50	5.59	7.38	9.13	10.84
50 x 40		1.92	2.83			150 x 60	6.06	8.01	9.92	11.79
50 x 50 *		2.20	3.30	4.24		150 x 80	7.01	9.27	11.49	13.67
60 x 20		1.45	2.12			160 x 50	5.83	7.70	9.53	11.32
60 x 30		1.77	2.60			160 x 60	6.30	8.32	10.31	12.26
60 x 40 *		2.08	3.06	3.93		160 x 80	7.24	9.58	11.88	14.14
60 x 50 *		2.39	3.53	4.56		170 x 50	6.06	8.01	9.92	11.79
60 x 60 *			3.95	5.18	6.39	170 x 60	6.54	8.64	10.70	12.73
70 x 30 *			2.77	3.61	4.42	170 x 80	7.48	9.89	12.27	14.61
70 x 50 *			3.71	4.87	6.00	180 x 60		8.95	11.10	13.20
70 x 70 *			4.65	6.13	7.56	180 x 80		10.21	12.67	15.08
80 x 30 *			3.00	3.93	4.82	180 x 100		11.46	14.24	16.97
80 x 40 *			3.47	4.55	5.64	200 x 60		9.58	11.88	14.14
80 x 50 *			3.95	5.18	6.38	200 x 80		10.84	13.45	16.03
80 x 60 *			4.42	5.81	7.17	200 x 100		12.09	15.02	17.98

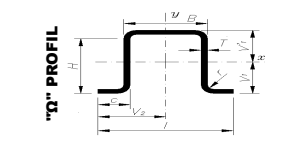
* Programi koji mogu da se rade i sa r=3mm



"U" PROFILE



"L" PROFILE



"Ω" PROFILE

**CEVI IZ NELEGIRANOG ČELIKA, POGODNE ZA ZAVARIVANJE I NAREZIVANJE
NAVOJA / NON-ALLOY STEEL TUBES SUITABLE FOR WELDING AND THREADING**

Prečnik Diameter D [mm]	Vrsta cevi (L1)		Type (L1)		Vrsta cevi (L2)		Type (L2)		
	1	2	1	2	1	2	1	2	
3/8	17.2		2.3	0.84	2	0.74	1.8	0.67	
1/2	21.3		2.6	1.21	2.3	1.08	2	0.95	
3/4	26.9		2.6	1.56	2.3	1.39	2.3	1.38	
1	33.7		3.2	2.41	2.9	2.20	2.6	1.98	
1 1/4	42.4	4	3.79	3.2	3.10	2.9	2.82	2.6	2.54
1 1/2	48.3	4	4.37	3.2	3.56	2.9	3.24	2.9	3.23
2	60.3	4.5	6.19	3.6	5.03	3.2	4.49	2.9	4.08
2 1/2	76.1	4.5	7.93	3.6	6.42	3.2	5.73	3.2	5.71
3	88.9	5	10.30	4	8.36	3.6	7.55	3.2	6.72
4	114.3	5.4	14.50	4.5	12.20	4	10.80	3.6	9.75
5	139.7	5.4	17.90	5	16.60				

PRECIZNE ČELIČNE CEVI / STEEL TUBES FOR PRECISION APPLICATIONS

Prečnik cevi / Tube Diameter D [mm]	Debljina zida / Wall Thickness T [mm]											
	1.5	2	2.2	2.5	3	3.5	4	4.5	5	5.5	6	
	Masa dužnog metra cevi / Unit Length Mass M [kg/m]											
20	0.68	0.89										
22	0.76	0.99										
25	0.87	1.13										
32	1.13	1.48	1.62									
38	1.35	1.78	1.94									